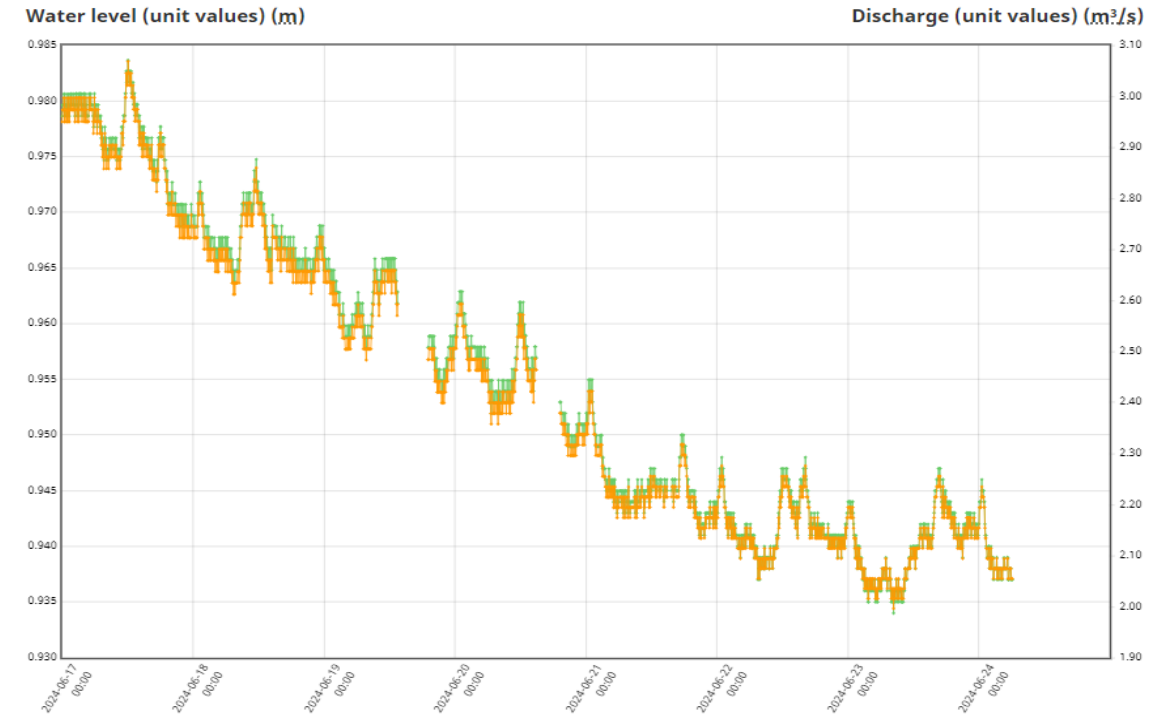


Arrowsmith Reservoir Weekly Report - June 17 to June 23, 2024 - page 1

REPORT SUMMARY

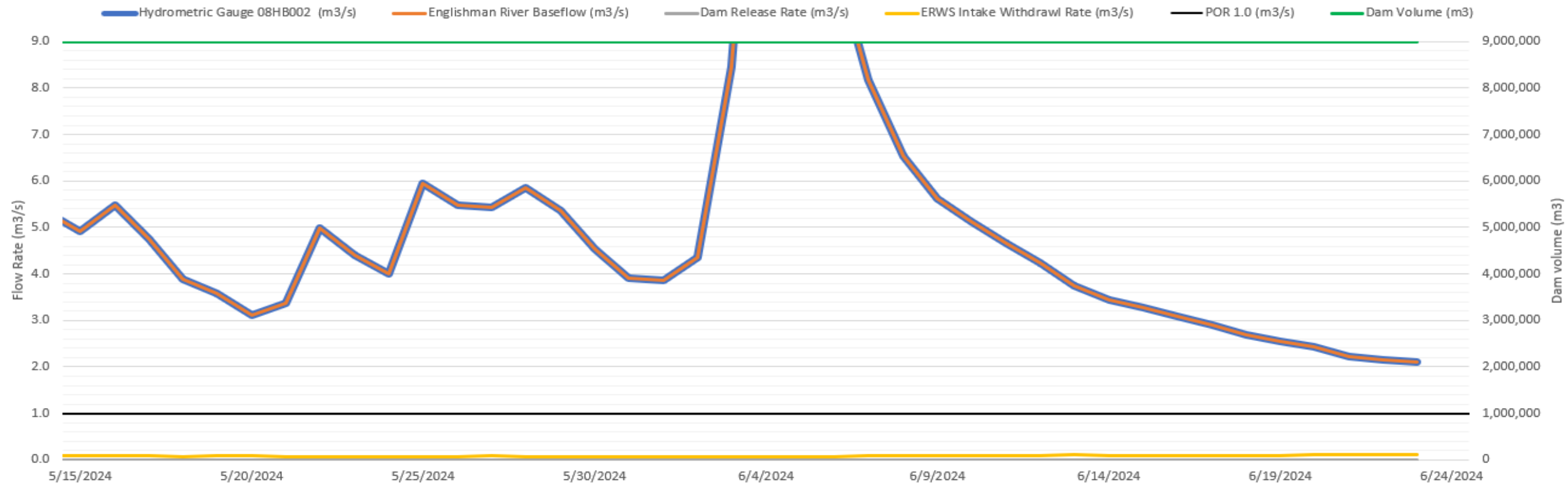
Arrowsmith Dam Reservoir Lake Level:	828.5
Arrowsmith Dam Reservoir Volume (est.):	9,000,000 m ³
Average Dam Release Rate:	0.0 m ³ /s
Average Englishman River Baseflow (June 17 - June 23):	2.4 m ³ /s
Average Hydrometric Gauge 08HB002 Flow (June 17 - June 23):	2.4 m ³ /s
Average ERWS Intake Withdrawl Flow (June 17 - June 23):	0.10 m ³ /s
Snow Depth Telemetry 3B26P (June 17 - June 23):	0 cm
Total Rainfall at Public Works Yard (June 17 - June 23):	0 mm
Average Weekly River Temperature near Railway (June 17 - June 23):	15.15°C
Comments: <ul style="list-style-type: none"> • Dam spilling over the spillway. • Hydrometric gauge 08HB002 calibrate on June 21 by WSC. • ERWS historian data lost June 19. Previous 7 day average calculated and used as assumed volume. 	

Hydrometric Gauge (08HB002)



POR Graph

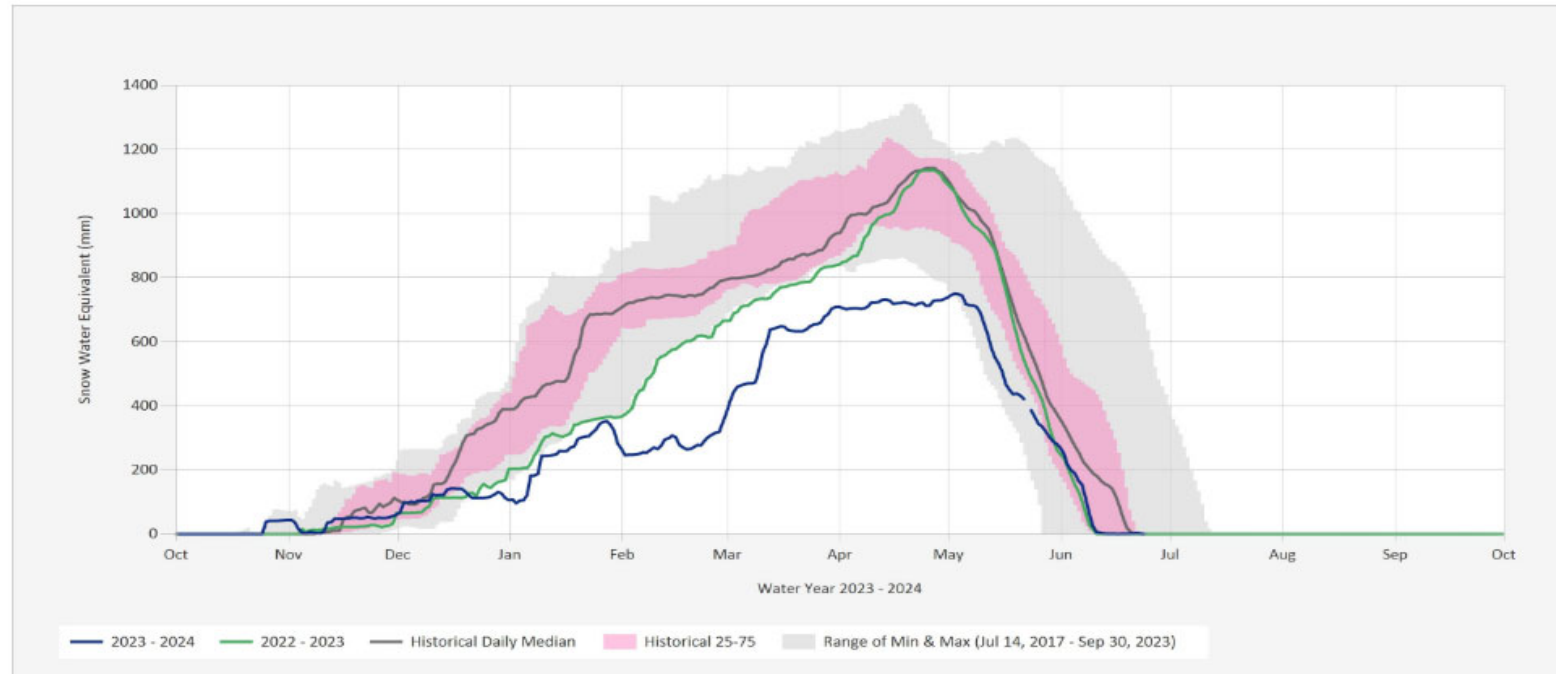
2024 Englishman River & Arrowsmith Dam Flows & Levels



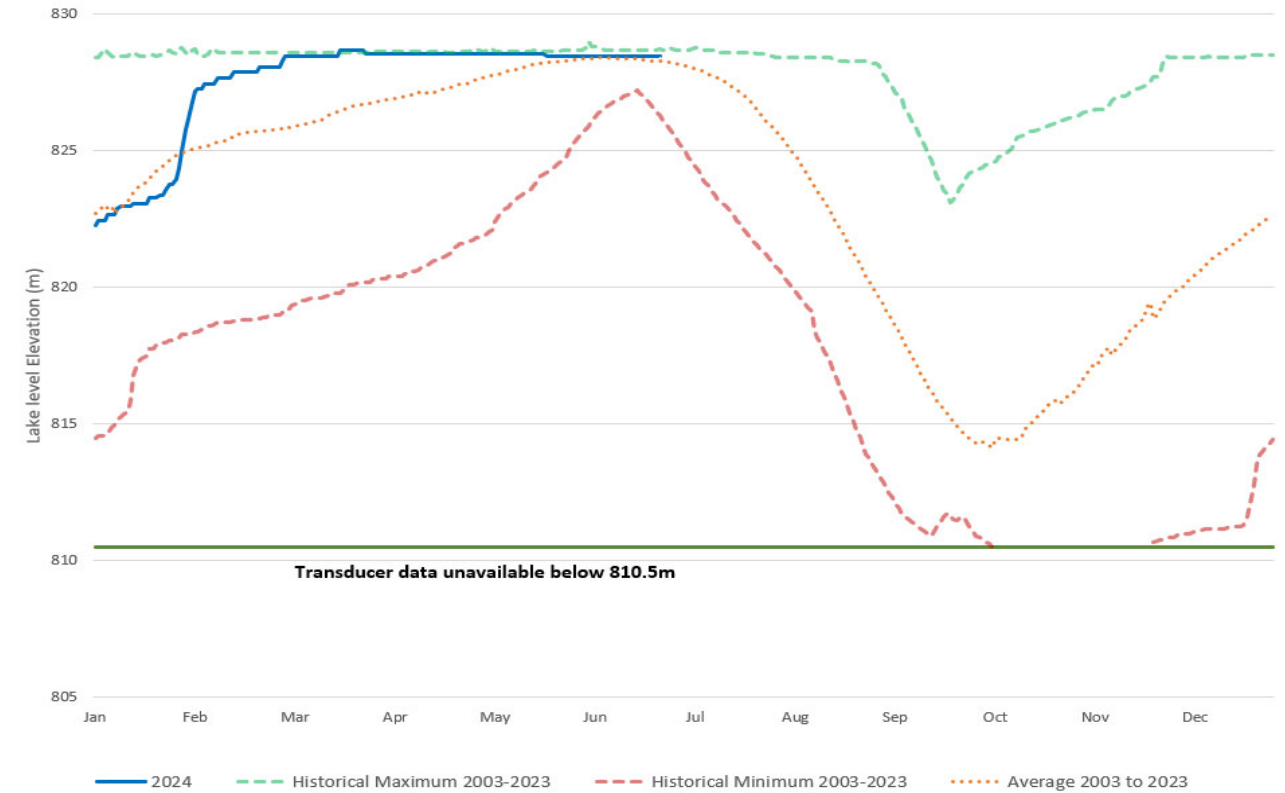
Arrowsmith Reservoir Weekly Report - June 17 to June 23, 2024 - page 2

Snow Weather Station Graph (Station 3B26P)

Source Data: SW.Daily@3B26P
 Location: Mount Arrowsmith, Latitude: 49.207376, Longitude: -124.567776, Elevation: : 1465 m

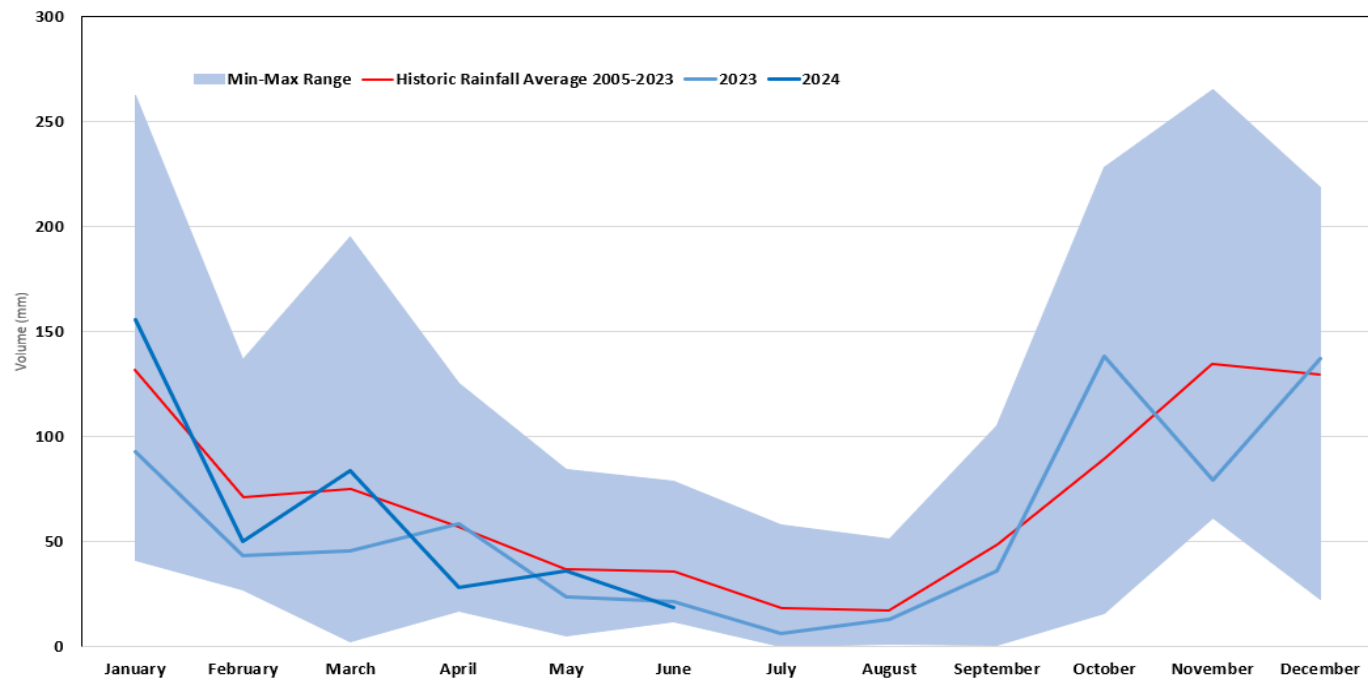


Arrowsmith Dam Lake Level



Rainfall

Historical Average Rainfall at the Public Works Yard



Weekly Forecast (Nanaimo)

Mon 24 Jun	Tue 25 Jun	Wed 26 Jun	Thu 27 Jun	Fri 28 Jun	Sat 29 Jun	Sun 30 Jun
21°C Clearing	23°C Mainly cloudy	17°C Periods of rain	18°C 40% Chance of showers	21°C Cloudy	22°C A mix of sun and cloud	21°C 30% Chance of showers
12°C Clear	16°C Cloudy	12°C Periods of rain	14°C Cloudy	15°C Cloudy periods	15°C 30% Chance of showers	